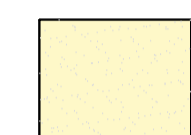
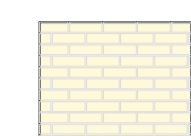
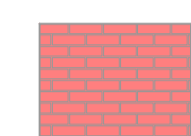
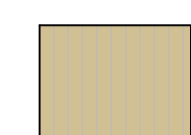

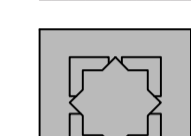


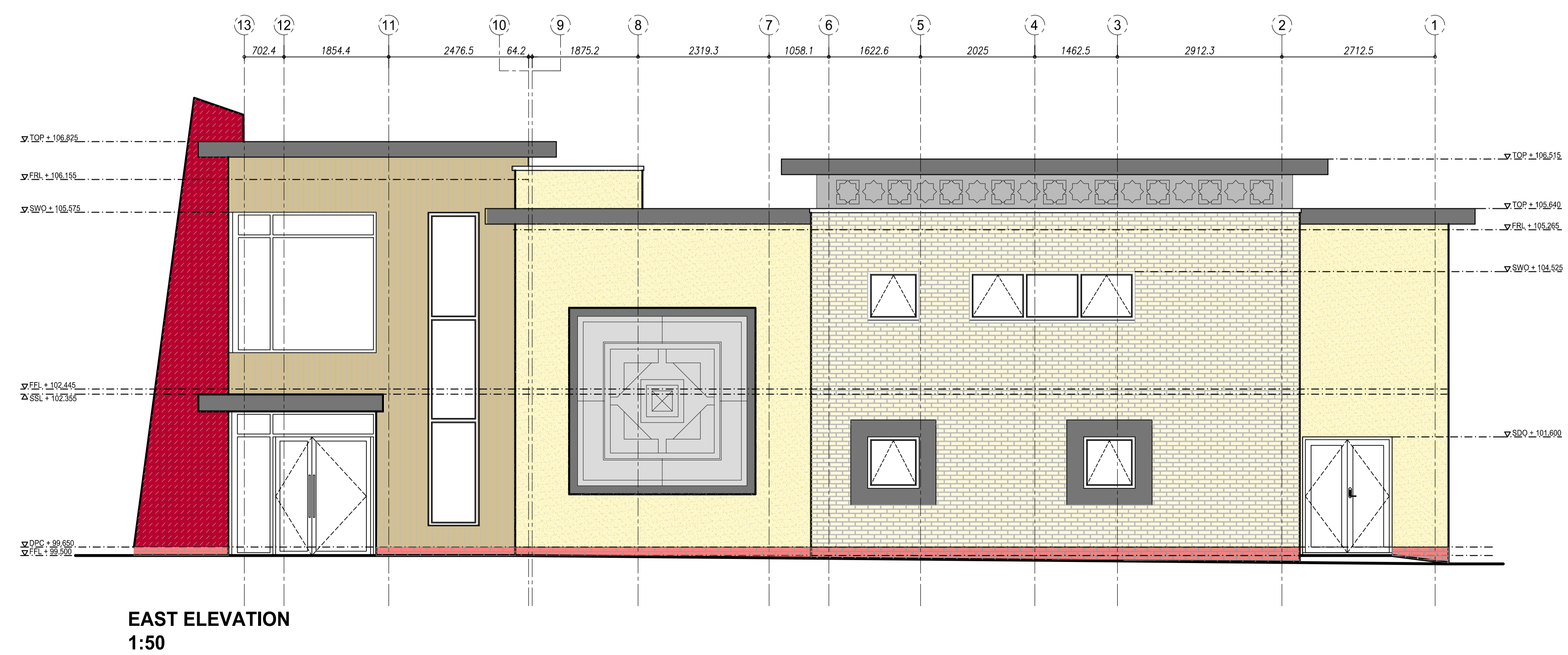
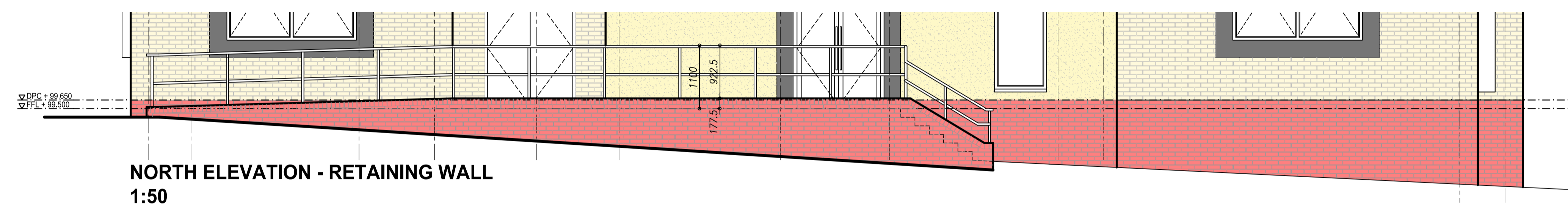


Notes	
No.	Description



-  Through coloured render - ivory
-  Buff coloured brickwork with 10mm mortar joints
-  Red coloured engineering brickwork with 10mm mortar joints
-  Western red cedar vertical cladding
-  Through coloured render - RAL3011
-  GRP feature cladding
-  GRP features - RAL7012
-  Pressed aluminium features PPC - RAL7012



Revision	Date	Description
A	08.05.15	DPC and engineering brickwork shown.

Pinnegar Hayward Design LLP 48-52 Vittoria Street Birmingham B1 3PE Tel 0121 236 7009 Fax 0121 236 8485 Email design@p-h-d.co.uk		 ARCHITECTS C D M CO-ORDINATORS PROJECT MANAGERS
Client SHAYLOR GROUP		
Project SRI LANKAN COMMUNITY CENTRE		
Location MILTON KEYNES		
Drawing Title ELEVATIONS 2		
Stage WORKING		
Scale 1:50	Date 27.01.15	Drawn DLB
Job No. 1934	Drawing No. 56	Checked SW
		Revision A